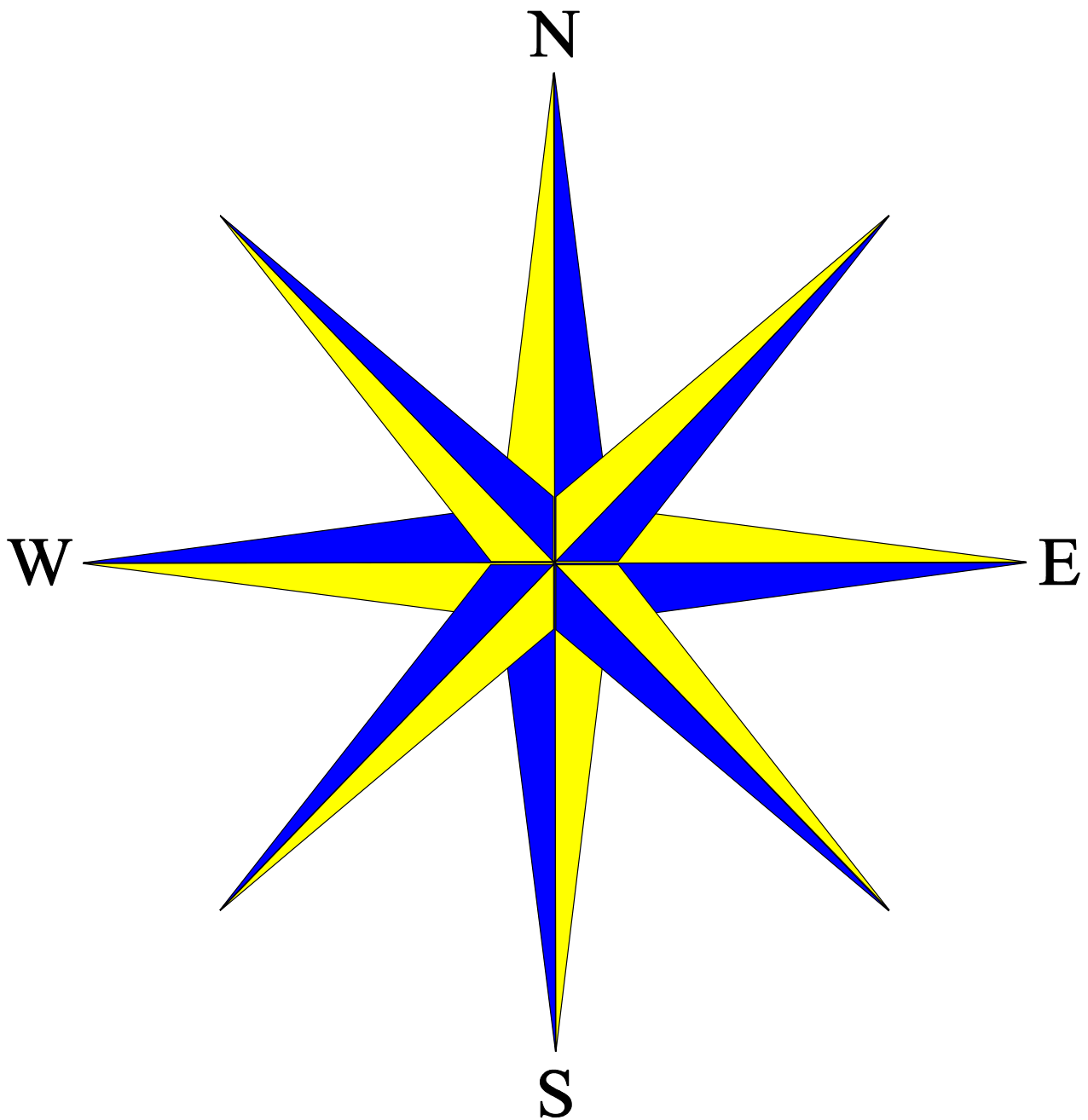


Southern Road Primary School



School Prospectus 2016/2017

CONTENTS

❖ School Details	3
❖ An Introduction To Our School	4
❖ The Ethos & values of Our School	5
❖ Times of the Day	6
❖ Attendance / Holidays / Welfare	7
❖ Admissions / Special Educational Needs	8
❖ Curriculum	9
❖ Behaviour	14
❖ Recent Academic Progress	16
❖ General Information	18
❖ Uniform Prices	21
❖ Complaints	22
❖ Staffing 2016 - 2017	23
❖ School Dates 2016 – 2017	25

Welcome to Southern Road Primary School. We hope that this prospectus will provide useful information about our school and how it works, enabling you and your child /children to feel immediately involved in our school community. It should provide you with all the details necessary to ensure that you and your child make full use of all the facilities that the school can offer. Please do not hesitate to contact the school office if you have any questions or further queries. The school secretary will be more than happy to help you.

Our school address is:

Southern Road Primary School,
Southern Road,
Plaistow,
London,
E13 9JH.

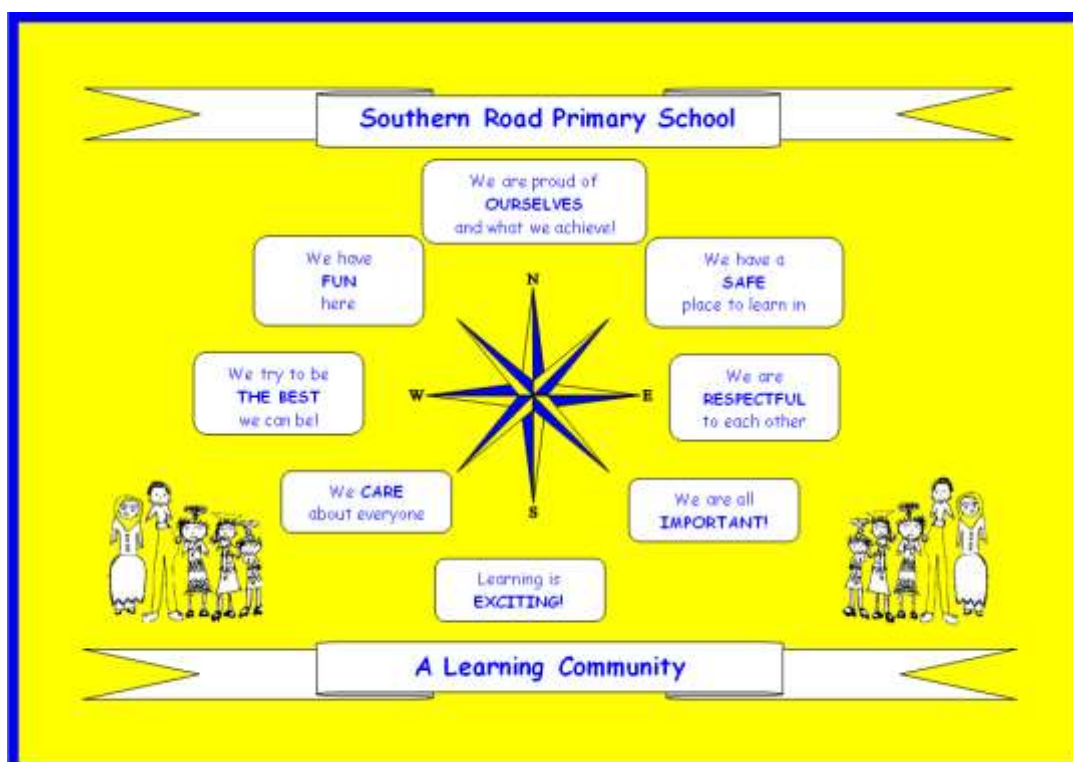
Phone number: 0208 471 9048

Fax number: 0208 471 4512

Our school website can be found at www.southernroad.newham.sch.uk

Our Head Teacher is Ms S. Lachowycz

Our Deputy Head Teachers are- Ms D. Lawrence and Ms H. Yearnshire



An Introduction to our School

Southern Road Primary School is situated in the London Borough of Newham. It is a large primary school of approximately 700 pupils, which also includes a 120 part-time places nursery. It was formed in April 1990 through the amalgamation of Southern Road Infant and Southern Road Junior schools.

The school serves a diverse multi-cultural and multi-faith community and we are proud of the diversity and cultural mix within our pupil population.

The school is housed in two modern buildings, each with its own, dining area and hall. The junior building has 15 classrooms, many of which open out onto large practical areas whilst the infant building is open plan, with 12 teaching areas. The nursery has three large rooms each having access to toilets and an outside play space for the children. There are also dedicated rooms for Art and Music, an ICT suite, Multi Media Suite, Sensory Room and Library.

The school currently has 25 class teachers, a Head Teacher, 2 Deputy Head Teachers, 1 teaching Assistant Head Teacher, 3 Phase Leaders, 1 School Business Manager, 2 Inclusion Managers, 1 English Language teacher, 4 nursery nurses, 13 teaching assistants, 19 Learning Support Assistants (Full and Part Time), 3 Cover Supervisors, 1 Welfare Assistant, 1 Attendance Officer, 1 Family Support Worker, 3 administrative staff and a Site Supervisor.

Parental involvement is actively encouraged and we keep a register of parent helpers. We provide a termly programme of extra-curricular activities for pupils both at lunchtime and after school. This programme together with information about the current term's events is available on our website and published in the "Compass" our school newsletter, which is sent to parent/ carers at end of each half term.

Southern Road has an active Governing Body who involve themselves in the everyday life of the school and work closely with the Head Teacher in making decisions about the School and planning for future development.

Our Chair of Governors is Mrs B. Stuckey
Our Vice Chairs of Governors is Mrs S. Flores

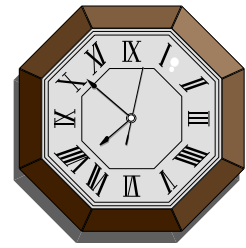
The Ethos and Values of our School

The aims of Southern Road Primary School are:

- **To equip all learners with the necessary skills needed to develop their own interests / personal choices and challenges.**
- **To provide a fun, safe environment where all learners feel valued. Where they can share their successes and failures without fear.**
- **To embrace and celebrate diversity and promote cohesion between and within the communities of our school.**

To achieve these aims we must: -

- Create a stimulating and attractive environment, which supports learning.
- Provide access to a broad, balanced curriculum, which offers pace, challenge, continuity, and progression.
- Encourage pupils in their learning through active participation, differentiated teaching, effective assessment, feedback and target setting.
- Extend pupils fully by encouraging perseverance and aiming for maximum success in all things.
- Support pupils in developing a sense of right and wrong through example and a school code of conduct.
- Celebrate pupil's success and share it within the school and the wider community.
- Ensure equality of opportunity underpins everything we do. Develop a sense of community where all pupils, parents, staff and others feel valued and respected.



Times of the Day

Nursery	8:45am --11:45am	12:30pm--3:30pm
Key Stage 1	8:55am --12 noon	1:00pm -- 3:20pm
Key Stage 2	9:00am--12 noon	1:00pm -- 3 :15pm

Bringing and collecting children

- Nursery - Children should be brought to and collected from their own classroom doors.
- Key Stage 1 (Infant building) - Children should be brought to and collected from their respective classroom doors at the beginning and end of the day.
- Key Stage 2 (Junior building) - Children should be brought to and collected from the junior playground area, which is located at the rear of the school.
- Please make every effort to collect your child on time.
- If for any reason you are unavoidably delayed please try to make contact with us so that we can reassure your child. Children who are not collected at the end of the school day wait in the school's reception area, which is adjacent to the main school office for their parents to arrive.

Attendance & Lateness

It is most important that children attend regularly for them to reach their full potential. If your child is absent for any reason we require a letter stating the reasons. If no letter of explanation is received, then an official form will be sent which you will need to complete and return as soon as possible.

Similarly, we believe it is important that your child is punctual to all sessions. In cases of persistent lateness you will be informed of the school's concerns.

Attendance September 2015 - June 2016 was 95.5%

Number of pupils on roll: 700



Holidays

From the 1st September 2013 the Head Teacher is no longer allowed to grant any leave of absence during term time. This means that the school will not be able to authorise parents/carers taking children out of school, for example to go on holiday or abroad.

If you take your child/children out of school during term time you may be issued with a Penalty Notice. A Penalty Notice means a fine for each parent/carer of £60 if paid within 21 days, rising to £120 each if not paid within 28 days. Non-payment will result in prosecution under Section 444(1) of the Education Act 1996.

Education Welfare Officer

The school has an Education Welfare Officer, who in partnership with the school regularly monitors attendance and lateness. In cases of continued absence or persistent lateness she will make home visits to discuss the reasons for the child's irregular attendance or lateness and will try to help to resolve the issue. Parents have a legal responsibility to ensure that their child attends school regularly.

Admissions

We admit children in line with Newham's admission arrangements. For Nursery admissions, your child's name can be placed on the waiting list at the age of two. Parent/Carers are requested to complete a registration form, which can be collected from and returned to the school office along with the correct forms of identification, also at this time you will be given a brief booklet which introduces our school to you. Regrettably we cannot accept registration of children over the phone. The London Borough of Newham is the Admission Authority for this school and all admissions are organised centrally. More information can be found at: <http://www.newham.gov.uk/Pages/Services/Admissions-primary-school.aspx>

When you are offered a place at Southern Road you will be asked to come for an admission interview, at which time you will be able to meet your child's teacher and have any queries or worries addressed. At the time of admission the parent will receive a copy of our current prospectus and have the opportunity to purchase a book bag as well as a bag in which to keep PE kit.

Parents please note that before deciding to apply to Southern Road you are very welcome to call into the School Office and make an appointment with the Attendance Officer to look around the school.

Special Educational Needs

In accordance with Newham's Inclusive policy, Southern Road Primary School believes that all children have an equal entitlement to enter the school. The school welcomes children with Special Educational Needs (SEN), aiming to provide them with equal access to the curriculum so that they can participate fully as members of the school community. If parents/carers have any concerns or queries, these should be directed in the first instance to the class teacher or alternatively to the Special Educational Needs Coordinator.

In September 2014 Newham published a 'Local Offer' which provides information about accessing services and support for children and young people with SEN in the local area. This is available on the Newham website. Southern Road Primary's SEN information report outlines how the school supports pupils with SEN and the 'School Offer' outlines what support is available. These are both available on the school's website.

Curriculum

Aims

Through our curriculum we aim for all our children to develop as individuals and as independent learners. We strive for each child to reach their full potential and as a school we are totally committed to equality of opportunity for all our pupils. We have a consistent offer of support, care & guidance throughout our school and high standards of achievement. There is a whole school approach to teaching and learning.

Our curriculum is designed to encompass 4 main areas: -

BREADTH.....

Introducing children to a wide range of knowledge, understanding and skills.

BALANCE.....

Each area of the curriculum is allocated a proportion of time on each year group's timetable. According to government guidelines.

RELEVANCE.....

Our curriculum is carefully planned to take into account the needs of our children and to equip them to take a responsible place in our society.

DIFFERENTIATION

The activities planned cater for the differing needs and abilities of our children. We fully implement Newham's Inclusive Education policy, educating children with special educational needs alongside mainstream pupils, and plan to further develop the abilities of our more able pupils.

The curriculum at Southern Road is designed to meet the needs of all its children.

Organisation of the Curriculum

Pupils are organised into year groups with three classes in each year group. No class exceeds 30 pupils. Every class in Key Stage 1 (years one and two) and the Foundation Stage (Nursery and Reception) are provided with a Teaching Assistant to support learning. Every year group in Key Stage 2 (years three, four, five, six) has a Teaching Assistant. We also have additional teaching staff who work in partnership with year groups, to support those with English as an additional language.

Children in Key Stage 1 and Key Stage 2 are taught Mathematics and English every morning. In the afternoons we teach subjects included in the National Curriculum through a 'Creative Curriculum' approach, whereby opportunities for linking subjects and skills are identified and planned to enhance children's learning. The subjects covered include: Science, Design Technology, Computing, Personal, Social, Emotional Development (PSED), History, Geography, Music, Physical Education (PE) and Art. We follow Newham's Agreed Syllabus for Religious Education and Spanish is taught to all year groups by our specialist Spanish teacher.

Children in the Foundation Stage follow the areas of learning set out in the Early Years Foundation Stage Framework. This includes the 3 prime areas which are: Communication and Language (CL), Physical Development (PD) and Personal, Social and Emotional Development (PSED).

And the 4 specific areas which are: Literacy, Mathematics, Understanding the world (UW) and Expressive Arts and Design (EAD).

The curriculum is adapted to meet the needs of all children and those who have a specific learning need are supported by our Learning Support Assistants.



Religious Education

RE has a special place in the curriculum of Southern Road Primary School as we recognise the importance it plays in the spiritual, moral, cultural and social development of the children. We are aiming to help children develop respect and understanding for all people and an awareness of the essential role of religion in today's world. By encouraging children to reflect on their life experiences in RE we are able to place emphasis on how unique and special they each are.

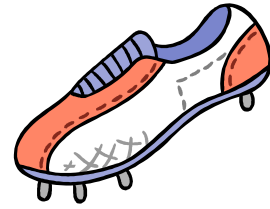
The needs of all the children in RE will be met.

- ◆ It is recognised in school that parents have the right to withdraw their children from RE on the grounds of conscience. It is hoped that before a written request is made parents will contact the RE co-ordinator to discuss their concerns about the RE curriculum. A letter must also be sent to the school's Chair of Governors informing him/ her of the parent's decision.

Collective Worship

Parents also have legal right to request that their children do not participate in collective worship. An appointment should be made with the Head Teacher to discuss the request, followed by a letter to the Chair of the Governing Body of the school confirming the parent's wishes. If a child is withdrawn from collective worship then he/she will be given work to complete during that time.

An inspection of the teaching and learning in RE and Collective Worship was conducted across the school by the local authority. The School Improvement Partner is in agreement with the school's judgement that RE and Collective worship is good in the school. It was also reported that children enjoyed and valued learning in RE and that it made a significant contribution to developing community cohesion across the school.



Sporting Aims of the School

The school teaches PE including dance, and swimming in line with the National Curriculum. All children will participate in gymnastics, team games, field events and other related sporting events. We also organise Sports days in the Summer term for the whole school. Parents are also encouraged to join in with these events. The school has a thriving extra-curricular clubs programme which demonstrates the school's commitment to sport and includes, mixed football, cricket coaching, basketball, dance art and craft and drama.

Year 6 children have the opportunity to attend an outdoors residential centre at Fairplay House.



Smoke Free School Policy

As a part of the school's Health and Safety policy arrangements, a smoke free policy has been developed in line with recommended good practice from the Healthy School's initiative.

We aim to provide a smoke – free school environment for all those who work in, study in or visit the school. Smoking is not permitted in any building on school premises, including kitchens, nor on any part of the school's property, including the school's entrance area, playgrounds, sports or recreation areas, car parks, garden areas, walkways, school vehicles or any other land which forms part of the school's premises.

Sex & Relationships Education Policy

Children are naturally inquisitive and ask questions not only about the basic facts of reproduction, but also about values and attitudes. Therefore the sex education policy aims to:

- Teach the process of the development and reproduction in mammals and other living things in line with the requirements of the National Curriculum.
- To generate an atmosphere where questions about sexual development and reproduction can be asked and answered without embarrassment on either side.
- To use the correct vocabulary for all parts of the body.
- To explain puberty changes and the relationship between physical and emotional development.
- To raise awareness of the importance of the equality of opportunity.
- To encourage children to recognise the value of family life and to acknowledge the quality of respect for self and respect for others.

Please note:

Parents are always invited to an initial meeting and subsequently staff write to parents and inform them when sex education is due to take place, thus giving them the opportunity to withdraw their child from these sessions. Teaching materials can also be made available for parents to see and discuss with the teacher.

Behaviour

School policy in this area promotes positive behaviour by encouraging the children to respect and care for all members of the school community. The school has also developed a clear strategy to deal with any instances of bullying and these are displayed prominently within the school.

The school has a code of conduct, which is displayed in every classroom and in many communal areas. It is discussed regularly with the children.

In Southern Road School:

We respect everyone

By caring, sharing, and helping each other

By communicating,

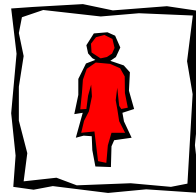
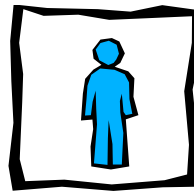
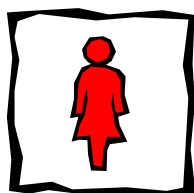
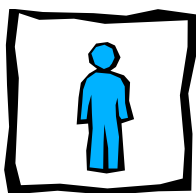
(Talking, listening, and understanding),

By being honest, polite and thoughtful.

Classroom rules are negotiated with each class every September and displayed for everyone to see.

We believe that by fostering our children's sense of responsibility within school that this has a direct impact on behaviour. Thus we are very keen to foster children's responsibilities within the school community. Two children from each class from Years 1-6 are elected to our school council each year. The council meets regularly with staff and suggestions/concerns are then raised with the Head Teacher. We operate a system of Peer Mediation during lunch-times.

We also employ a whole range of strategies for celebrating pupil achievements and good behaviour; these include awarding significant achievement certificates, targeted displays, and attendance certificates and achievement assemblies.



Anti-Bullying Strategy

Our Anti bullying strategy works in conjunction with the school's Positive Behaviour Policy.

We at Southern Road consider bullying to be the wilful, conscious desire to manipulate, hurt, threaten, or frighten someone physically, verbally, by gesture or look. This may become apparent in one or more of the following ways.

- Making a person's life a misery by deliberately picking on them
- Physical attacks - hitting, kicking, pushing, barring the way, unwanted touching.
- Spreading rumours
- Coercion
- Isolating people
- Name calling
- Graffiti – on walls, books, belongings
- Racist or sexual harassment
- Cyber Bullying – All areas of internet, such as email & chat room misuse, social networking site misuse, mobile threats by text messaging or calls, misuse of associated technology, i.e. cameras & video facilities.

Bullying could be either systematic or serious one - off offences. It could be continual bullying of one individual or bullying of a number of different individuals.

We acknowledge that bullying does take place at times, in our school. In order to minimise it we employ a range of strategies including:

- Fostering an ethos of regard for individuals
- Striving to reflect attitudes which value all cultures
- Establishing an environment in which pupils and parents feel free to come forward and report any anxieties they may have
- Making it known that our school will always act to combat bullying and we will make all procedures known to children , parents and staff
- Making it plain to prospective parents and children exactly what we mean by unacceptable behaviour
- Ensuring that any victims of bullying are supported.

Recent Academic Progress

We have continued to make sound progress in raising the attainment of our pupils in Key Stage 2, as is evident from the tables below. In our attempt to embed this success we continue to set targets for every age group throughout the school and in addition, we are constantly reviewing assessments and test results and analysing outcomes in order to target resources, both human and otherwise. For example, we continue to have a teaching assistant attached to each year group in Key Stage 2.

End of Key Stage 2 Results at Southern Road

The percentage of pupils achieving the expected standard at the end of Key Stage 2 is outlined in the table below:

	2016
Reading	85%
Maths	95%
Grammar & Spelling	94%

Attendance Officer

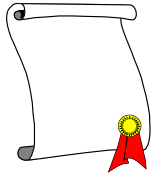
We employ an Attendance Officer, Surinder Mahil at our school. Her major roles within the school are in helping to reduce lateness, improve attendance and supporting children who are experiencing various difficulties within school.

Pupils who achieve 100% attendance each term are rewarded with a Gold Attendance Certificate. In addition to this there is a weekly attendance challenge for each Key Stage, with a reward for the highest achieving class.

Breakfast Club

The school offers a breakfast club every morning from 7:30 – 8:30 in the Key Stage 2 building. Here, children can get a nutritious, healthy breakfast including cereal and fruit.

Ofsted Inspection



In June 2014 the school was inspected by Ofsted. They reported that Southern Road Primary remains a “good school,” and noted that:

- ◆ Senior leaders and governors have raised attainment and sustained the strengths found at the time of the previous inspection.
- ◆ Pupils make good progress and attainment in Year 6 is well above average.
- ◆ The overall quality of teaching and learning is good.
- ◆ Children in the Nursery make a good start to their education.
- ◆ Pupils behave well and feel safe.
- ◆ The Head Teacher and governors have taken the necessary action to maintain good teaching.
- ◆ A vibrant rich programme of work engages pupils’ interest and helps them to do their best.
- ◆ Governors know the school very well.

School Dinners

Currently all children are entitled to a free school meal. Provision is made for vegetarians and for children who cannot eat certain types of meat. All meat served at school is certified Halal (HMC).



Children may go home for lunch. If they are being collected from school, then please be punctual. **They should not return to school until just before 1:00pm.**

Alternatively, children may bring a packed lunch to school. Please ensure that it is packed in a suitable container and clearly marked with your child's name and class. Glass bottles should not be sent to school.

NB If your child wishes to fast as part of their religious observance you will need to put this request in writing.

School Dress Code

We expect all children to wear school uniform which consists of a white shirt / blouse and grey / black trousers / skirt or dress along with a royal blue jumper, fleece or sweatshirt. Please ensure that all articles of clothing are clearly labelled with the child's name especially school sweat shirts and coats as it does make returning lost property much easier.

Physical Education

We expect all children to change into their full PE kit, in school for each session. The PE kit includes:

- A plain white t-shirt (this must not be your child's regular school t-shirt)
- Black/navy tracksuit bottoms or shorts
- Trainers for outdoor PE
- A jumper or tracksuit jacket for cold weather (optional)

On their PE days, please ensure that your child comes to school wearing their school uniform and brings their PE kit to change into before the lesson. It is not acceptable for your child to come to school wearing their PE kit. If your child forgets their PE kit on one or more occasion, there will be consequences.

Your child will be asked to remove all jewellery before each lesson. If your child is unable to remove earrings, please provide them with plasters.

Swimming

As part of the PE National Curriculum, each Year 4 class attends swimming lessons once a week.

Each child is required to bring an appropriate sized swimming bag containing:

- A swimming hat,
- Towel,
- Swimming costume,
- A plastic bag (for storing wet items),
- Swimming goggles (these are optional).

The boys must wear tight fitting swimming shorts or trunks above the knee.

Girls must wear, an all in one, or single piece swimming costume, both of which must be lycra. The children are not permitted to wear any jewellery.

Separate changing facilities are provided for boys and girls and the children are supervised by an adult at all times.

Jewellery & Mobiles

In the interests of safety children are not encouraged to wear jewellery to school particularly large earrings, which can be very dangerous in any play situation. As children are not allowed to wear jewellery in PE it may be best if all jewellery is left at home on the days that these activities take place. The school can accept no responsibility for any items of jewellery, which are lost at school. Mobile phones should not be brought to school! If a child accidentally brings a mobile into school they should hand it into the school office for safe keeping (not their class teacher) and collect it at the end of the day.

Lost Property

If your child does lose any article of clothing or equipment then you or your child will need to visit Lost Property which is situated next to Ms Dee Fenton's first aid room in the Key Stage 1 building.



Money

No money should be brought to school unless requested/required for educational visits, photographs, special collections or book fair.

Charging Policy

During their time at school your child may be involved in a range of outside activities during the school day, or as the child moves through the school, in the evenings or at weekends. Such activities may involve a visit to a museum, a place of interest or a visit from a theatre group and will, certainly be linked to the work your child is undertaking in class. In such circumstances we will firstly inform you and seek your permission for your child to take part and also ask you for a contribution to the cost of the trip. If this causes difficulty in some families, it is our intention that we do everything we can to alleviate any such problems, so that, no pupil is disadvantaged and, that all can participate fully in visits.



Health and Welfare

The school has a first – aid room, which is located in the Key Stage 1 building, and staffed by Ms Dee Fenton. We also have a number of other staff who have had first aid training. We do not have the facilities to look after children who are in pain, discomfort, feel sick, etc. and if your child is ill then we will contact you and ask you to collect your child from school as soon as possible. We do not administer medicines in school unless to asthmatics, diabetics or other such conditions. We will require a medical form to be completed, which can be collected from the school office.

409 BARKING ROAD EAST HAM LONDON E6 2JT

Phone: 020 8472 1729 www.ianhoward.co.uk

Email: howard@ianhoward.co.uk vat no 203845328

OPENING HOURS MONDAY TO SATURDAY 9AM TO 5:30PM

SUNDAY 10:30AM TO 4:30PM

Southern Road Primary School PRICE LIST 2017

SOUTHERN ROAD SWEATSHIRT	2-3 3-4 5-6 7-8 9-10 11-12 13	£10
	ADULT SIZE: SMALL MEDIUM	£11
SOUTHERN ROAD FLEECE JACKET	3-4 5-6 7-8 9-10 11-12 13	£14
	ADULT SIZE: SMALL MEDIUM	£15
SOUTHERN ROAD POLO SHIRT	2-3 3-4 5-6 7-8 9-10 11-12 13,	£7
	ADULT SIZE: SMALL MEDIUM	£8
REGULAR FIT BOYS TROUSERS	2-3 3-4 4-5 5-6 6-7 7-8 8-9	£9
	9-10 10-11	£10
	11-12	£11
BOX PLEATED SKIRT	2-3 3-4 4-5 5-6 6-7 7-8	£8
	8-9 9-10 11-12	£10
	13-14 15-16	£12
PINAFORE DRESS	2-3 3-4 4-5 5-6 6-7 7-8 8-9 9-10	£12
	11-12 13-14 15-16	£14
GIRLS HEART STYLE TROUSERS	2-3 3-4 4-5 5-6 6-7 7-8 8-9	£12.99
	9-10 11-12	£13.99
	13 -14 15-16	£14.99

PE KIT:

BLACK SHORTS FROM £4, BLACK JOGGING BOTTOMS FROM £8

WHITE PE T-SHIRT FROM £3.50, PLIMSOLLS FROM £5



WE ARE LOCATED IN EAST HAM,
OPPOSITE NEWHAM TOWN HALL.
MAIN BUS ROUTES: 5 238 300 325.
WE ACCEPT ALL MAJOR CREDIT
AND DEBIT CARDS.

* Prices correct at the time of printing

Book Bags are also available from the school office at cost of £3.00

Parental Links

We aim to build good links with parents and to work in close partnership to the benefit of the children. We have a well-established home school contract which parent; child and respective teacher are required to sign on the child's admission. We endeavour to make parents feel comfortable about visiting school and discussing matters relating to their child's progress. As we operate an open door policy many parents delivering or collecting their children from school talk to the staff on an informal basis. In addition we hold two parents' evenings a year when we meet with parents on a more formal basis to discuss their child's progress and keep them informed about the school curriculum. Each year we send out a written report to parents at the end of the Spring term. Parents are actively encouraged to come into the school to help in the classroom.

We have a newsletter, which is sent out to all parents at the end of each half term.

Raising concerns and resolving complaints

From time to time parents, and others connected with the school, will become aware of matters which cause them concern. To encourage resolution of such situations the Governing Body has adopted a "Complaints Procedure".

The procedure is devised with the intention that it will:

- Usually be possible to resolve problems by informal means
- Be simple to use and understand
- Be non-adversarial
- Provide confidentiality
- Allow problems to be handled swiftly
- Address all the points at issue
- Inform future practice so that the problem is unlikely to recur.



Full details of the procedure may be obtained from the School Office and / or the School Website.

STAFFING ACADEMIC YEAR 2016 - 2017
HEADTEACHER: MS. STEPHANIE LACHOWYCZ
DEPUTY HEADTEACHERS: MS. DENA LAWRENCE & MS HELEN
YEARNSHIRE

NURSERY
Red Class , Barbara Broughton (Teacher), Saleha Begum,(Nursery Nurse) Reefa Hussain (Teaching Assistant)
Blue Class , Sharon Ormsby (Teacher), Catherine Morti (Nursery Nurse) Wahida Miah (Teaching Assistant)
Nursery Nurses: Christine McDermott, Ellen Spicer
Teaching Assistants (Part-time): Asma Miah
RECEPTION
Purple Class, Tania Begum
Green Class, Kimberley Burgess
Orange Class, Enoho Okoro
Teaching Assistants: Lorraine Daniels ,Shirley Wadhwani, Debbie Taunton,
YEAR 1 and 2 Phase Leader: Ashfiya Bobat
1AR, Allison Redman
1PG, Paul Greengrass
1SK, Sylwia Krzyzyska
Teaching Assistants: Rose Watson, Sarasvardy Segarane, Bashira Rahman
YEAR 2
2AM, Amy Miller
2HB, Harpiya Bhachoo
2NW, Natalie Wireko
Teaching Assistants: Kalpona Begum, Queenie Lowe, Anna Gunnarson
YEAR 3 and 4 Phase Leader: Gillian Dubock
3LV, Liezel Van Schalkwyk
3MB, Raeesa Umar
3MP, Gillian Dubock
Teaching Assistant: Sreekala Pillai
YEAR 4
4TP, Tracy Peters
4PM, Paul Marshall
4TB, Tania Baldwin
Teaching Assistant: Jacinta Smart
YEAR 5 and 6 Phase Leader: Kirsty Crozier
5CW, Christine Wolstenholme
5MD, Michelle Daniel
5PP, Tamara Oldfield
Teaching Assistant: Nusrat Abdul Khalique

YEAR 6	
6CS, Caroline Sharp	
6RC, Rebecca Pannifer	
6LT, Lucy Tripp	
Teaching Assistant: Rachel England	
PPA+	
Bethany Watson	Creative Arts
Daryl Permaul	PE
Natalia Martinez	Spanish
Fatima Lulat	KS1 Support
Nandaketu	KS2 Support
Garry Crompton (Assistant Head Teacher)	Gifted & Talented

Learning Support Assistants (Full Time)
Angela Bannister, Joan Bogle, Tamara Gayrall, Zulekha Ali, Saroj Peshvaria, Marie Waller, Gurdip Virdee, Daphne Williams, Marjorie Watson, Katherine Martinez, Kerry James-Light
Learning Support Assistants (Part Time)
Wasima Choudhury, Corline Lawrence, Asma Miah, Melanie Simpson, Georgina Simmons, Atika Bousetta, Shaheen Shabir Marjorie Watson,

Cover Supervisors
Rukea Khanom, Tania Islam, Adrian Monk

SENCO – Emma Jokhan / Naima Ahmed

Attendance Officer– Surinder Mahil , **Family Support Worker** – Lynn Daniel

EAL Staff – Sila Chawda

School Business Manager – Esther Blake

School Office Manager – Jennifer Parillon

Administration Staff – Monica Ambersley, Tasneem Khan

Resource Assistant - Ferdinand Vengadaradje

Welfare Assistant – Dee Fenton

ICT Technician – Abdul Salam

Midday Supervisors – Angela Bannister, Husnara Khatum, Nazma Begum, Sofia Begum, Syfia Khanam, Carol Larkin, Debbie Peryer, Jacinta Smart, Zulekha Ali.

Site Supervisor – Terry Wilson

**SOUTHERN ROAD PRIMARY SCHOOL DATES
2016 / 2017**

THURSDAY 1 st SEPTEMBER 2016	STAFF INSET – SCHOOL CLOSED
FRIDAY 2 nd SEPTEMBER 2016	STAFF INSET – SCHOOL CLOSED
MONDAY 5 th SEPTEMBER 2016	AUTUMN TERM BEGINS (Y1 – Y6)
WEDNESDAY 7 th SEPTEMBER 2016	RECEPTION & NURSERY CLASSES START
FRIDAY 23 rd SEPTEMBER 2016	SCHOOL PHOTOGRAPHS – INDIVIDUAL/FAMILY
MONDAY 24 th OCTOBER - FRI 28 th OCTOBER 2016	HALF TERM - SCHOOL CLOSED
MONDAY 31 st OCTOBER 2016	SCHOOL RE-OPENS
TUESDAY 1 st NOVEMBER 2016	RECEPTION, YEAR 1 & 2 PARENTS EVENING 4-7p.m.
WEDNESDAY 2 nd NOVEMBER 2016	YR 3 & 4 PARENTS EVENING 4-7p.m.
THURSDAY 3 rd NOVEMBER 2016	YR 5 & 6 PARENTS EVENING 4-7p.m.
WEDNESDAY 23 rd NOVEMBER – FRIDAY 25 th NOVEMBER 2016	YEAR 6 AT OUTDOOR ADVENTURE CENTRE
TUESDAY 20 th DECEMBER 2016	LAST DAY OF TERM
WEDNESDAY 21 st DECEMBER 2016– TUESDAY 3 rd JANUARY 2017	CHRISTMAS / NEW YEAR BREAK
WEDNESDAY 4 th JANUARY 2017	STAFF INSET – SCHOOL CLOSED
THURSDAY 5 th JANUARY 2017	SPRING TERM STARTS
MONDAY 13 th - FRI 17 th FEBRUARY	HALF TERM - SCHOOL CLOSED
MONDAY 20 th FEBRUARY 2017	SCHOOL RE-OPENS
TUESDAY 28 th MARCH 2017	ANNUAL REPORT TO PARENTS
FRIDAY 31 st MARCH 2017	LAST DAY OF TERM
MONDAY 3 rd APRIL – MONDAY 17 th APRIL 2017	EASTER BREAK
TUESDAY 18 th APRIL 2017	SUMMER TERM STARTS
WEDNESDAY 26 th APRIL 2017	SCHOOL PHOTOGRAPHER - CLASSES
MONDAY 1 st MAY 2017	MAY DAY HOLIDAY – SCHOOL CLOSED
MONDAY 29 th MAY - FRI 2 nd JUNE 2017	HALF TERM - SCHOOL CLOSED
MONDAY 5 th JUNE 2017	SCHOOL RE-OPENS
THURSDAY 8 th JUNE 2017	SCHOOL CLOSED – POLLING STATION
FRIDAY 9 th JUNE 2017	STAFF INSET – SCHOOL CLOSED
TUESDAY 4 th JULY 2017	RECEPTION, YR 1 & 2 PARENTS EVENING 4- 7p.m.
WEDNESDAY 5 th JULY 2017	YR 3 & YR 4 PARENTS EVENING 4-7p.m.
THURSDAY 6 th JULY 2017	YR 5 & 6 PARENTS EVENING 4-7p.m.
WEDNESDAY 19 th JULY 2017	YEAR 6 GRADUATION
THURSDAY 20 th JULY 2017	LAST DAY OF TERM
FRIDAY 21 st JULY 2017	STAFF INSET – SCHOOL CLOSED

Please note, the school will not be closed for Eid, Diwali and Guru Nanak this year. However, families that celebrate these festivals are entitled to be absent on those occasions. This will not affect any attendance awards your child may be entitled to.

